

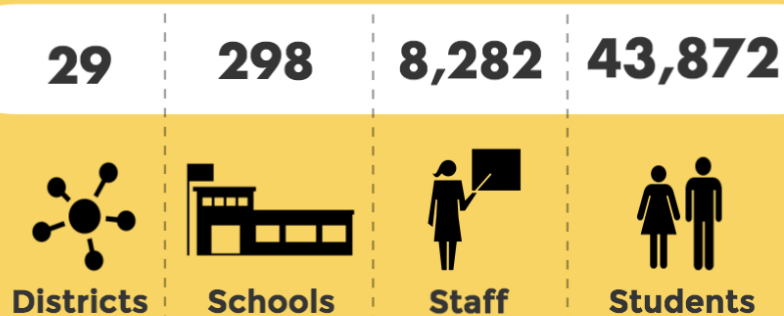
2016 Alaska

School Climate and Connectedness Survey



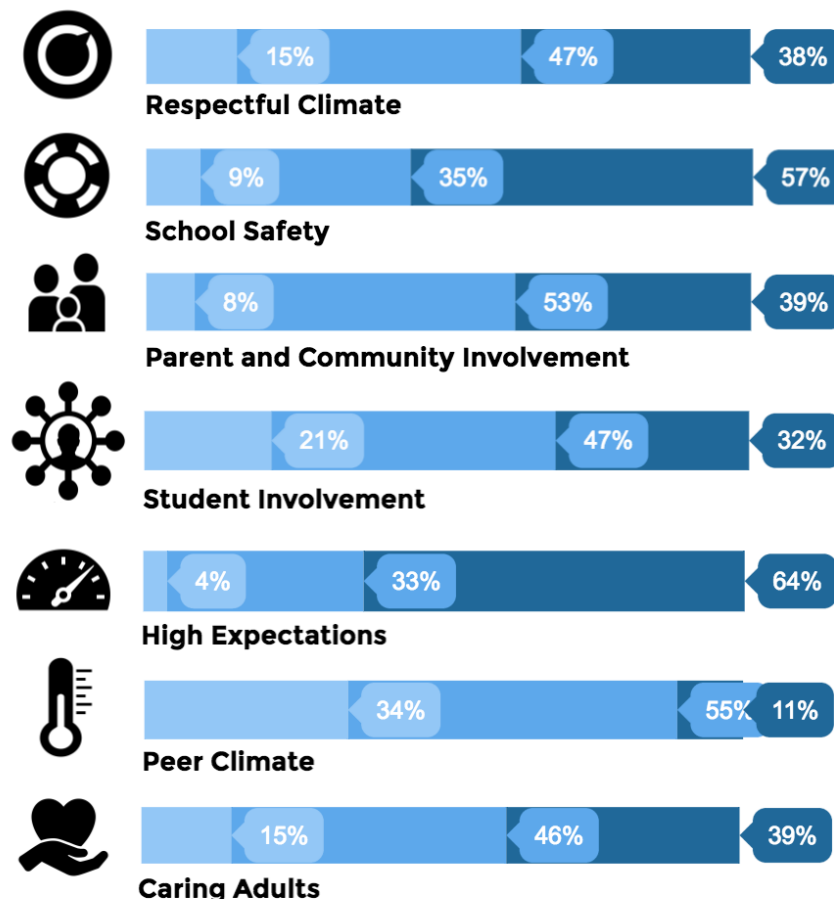
The School Climate and Connectedness Survey (SCCS) is a voluntary statewide survey taken by students and staff since 2006, developed by the American Institutes for Research (AIR) in partnership with AASB. It measures positive school climate, how connected students feel to adults and peers, social and emotional learning (SEL), and observed risk behaviors at school or school events.

Survey Participants



2016 Statewide Highlights

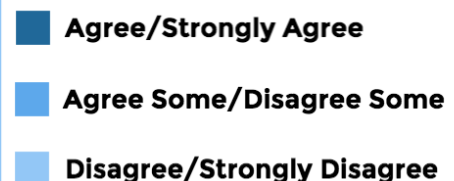
- The higher a school's climate ratings, the fewer student risk behaviors reported at school or school events.
- Significant increases in parent and community involvement student ratings from 2011 to 2016.
- Significant increases in student involvement and school leadership & involvement staff ratings from 2011 to 2016.
- Student reports of risk behaviors (peer delinquent behaviors and drug and alcohol use) declined significantly from 2011 to 2016.
- First year results for new social emotional learning scale for grades 6-12. Male students gave higher ratings than female students.



Student Results Grades 6-12 Survey

From 2011-2016

- Significant increases in Parent and Community Involvement.
- Significant declines in School Safety, Student Involvement, High Expectations, and Peer Climate.
- Ratings in other areas remained stable (Respectful Climate, Caring Adults).





Respectful Climate



School Safety



Parent and Community Involvement



School Leadership and Involvement



Student Involvement

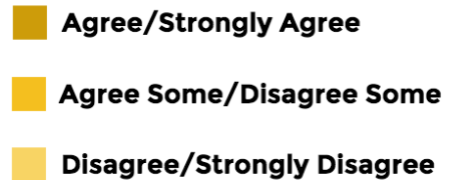


Staff Attitudes

Staff Results

From 2011-2016

- Increases in Student Involvement, School Leadership and Involvement.
- Decrease in Staff Attitudes.
- Rest of areas remained stable.



Select Findings



I feel safe at school



Adults in my community encourage students to take school seriously

Observed Student Risk Behaviors

Delinquent Behaviors

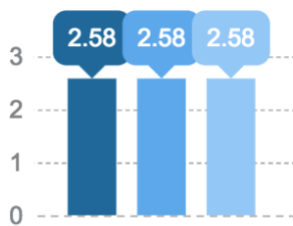
Student reports of Drug and Alcohol Use

Staff reports of Drug and Alcohol Use remained stable

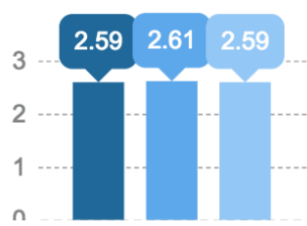


Student Results Grades 3-5 Survey

Caring Others

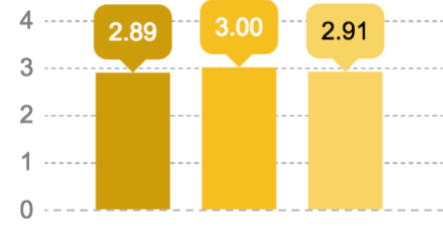


Social Emotional Learning



Small/Rural Large/Urban Statewide

Social & Emotional Learning Grades 6-12



Small/Rural Large/Urban Statewide

2016 Alaska School Climate & Connectedness Survey Results Summary
For more information on this survey, contact Jenni Lefing at jlefin@aaasb.org or 907-463-1660.