

Stronger Together: Community Engagement and Collaboration

March 19, 2022

Facilitation Team from AASB:

Lisa X'unyéil Worl

Claudia Plesa

Words of Welcome





Lisa X'unyéil Worl



Claudia Plesa

We are so glad to be here with you!

"Our Way of Life" Southeast Traditional Values & FAI Agreements

"Speak with Care"

Speak to be Understood; Listen to Understand

"Listen well and with Respect"

Value Our Time Together, Be Present; Be Engaged

**"Hold Each Other Up" - Safe Space for Meaningful
Conversation**

Challenges to Solutions

"Humor" - Our Value of Humor Helps Us

**"Be Strong in Mind, Body and Spirit" - Take Care of Yourself;
Take Care of Each Other**



association of
ALASKA
school boards

Purpose & Agenda

Purpose:

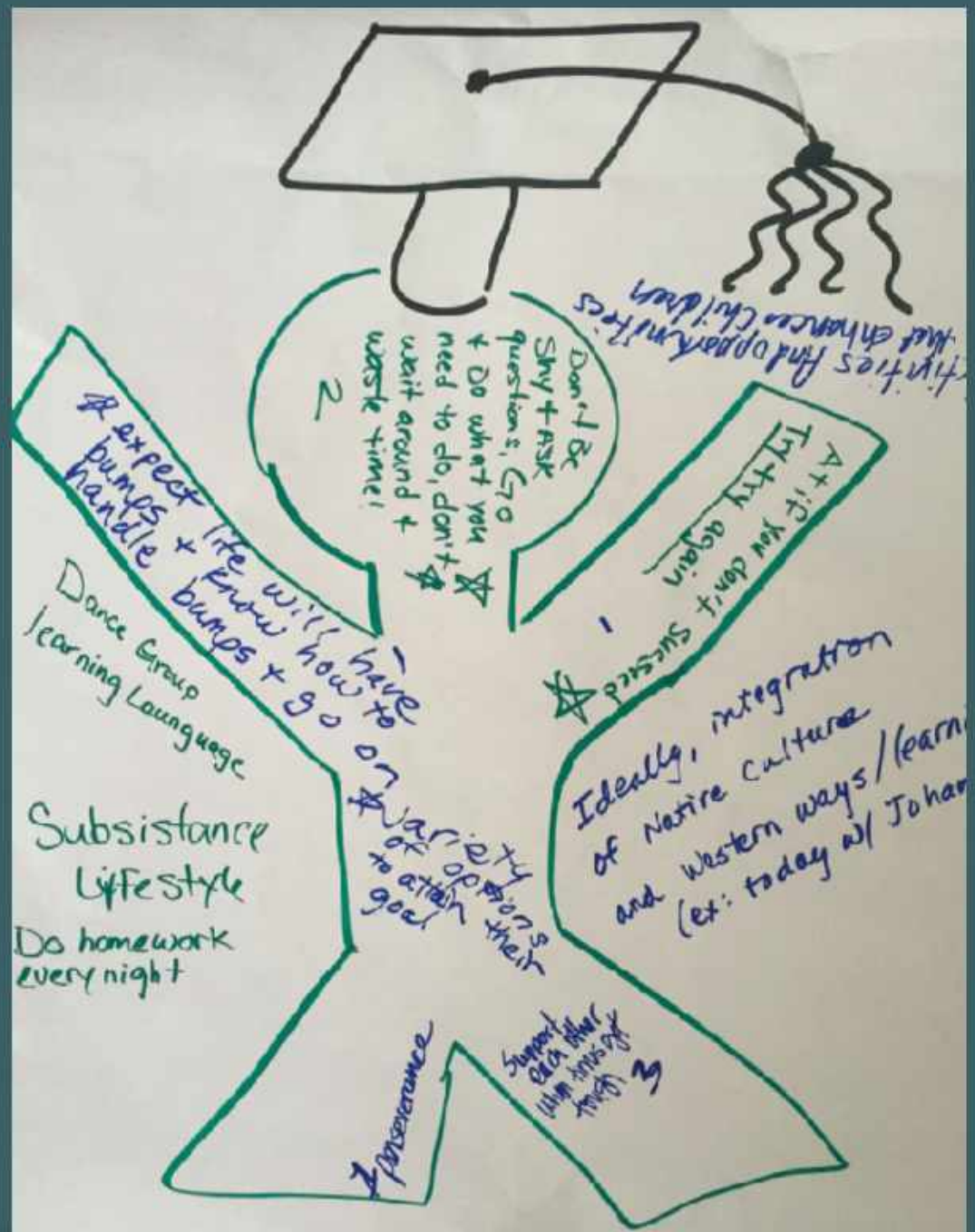
- Explore key components and mindsets of Community Engagement
- Discuss key research on Community Partnerships
- Discuss best practices for doing this work

Agenda

- Welcome, Agreements
- Introductions
- Importance of Community Engagement
- Community Examples
- Group discussion

REFLECTION:

What helped you to succeed?





“Community engagement is most successful when it respects the wisdom of the community and that wisdom is in the people.”



WHAT DOES THE RESEARCH SAY?

- Brain Science (ACES & Culturally Responsive Learning)
- Education Science (SEL, Engagement, School Climate, Academic Improvement)
- Health and Behavioral Health (Protective Factors- Trauma)
- Development: 40 Assets
- Community - Based Knowledge



Circle of Trust



INGREDIENTS OF SUCCESSFUL COMMUNITY ENGAGEMENT:

- 1) Coordinated
- 2) Collaborative
- 3) Embedded
- 4) Community/Family Partnership
- 5) Site Administrator Leadership
(key success factor)
- 6) Sequenced
- 7) Focused
- 8) Measured
- 9) Integrates Research and
Community Best-Practices

ICE TOOLS

Whole
School SEL /
Trauma
Informed

Youth
Leadership &
Engagement

School
Climate
Building

Cultural
Integration

Education
and
Engagement
Research

Assets and
Resiliency

Community
Planning &
Communication

Family
Partnerships

Community
Conversation
& Coalition
Building

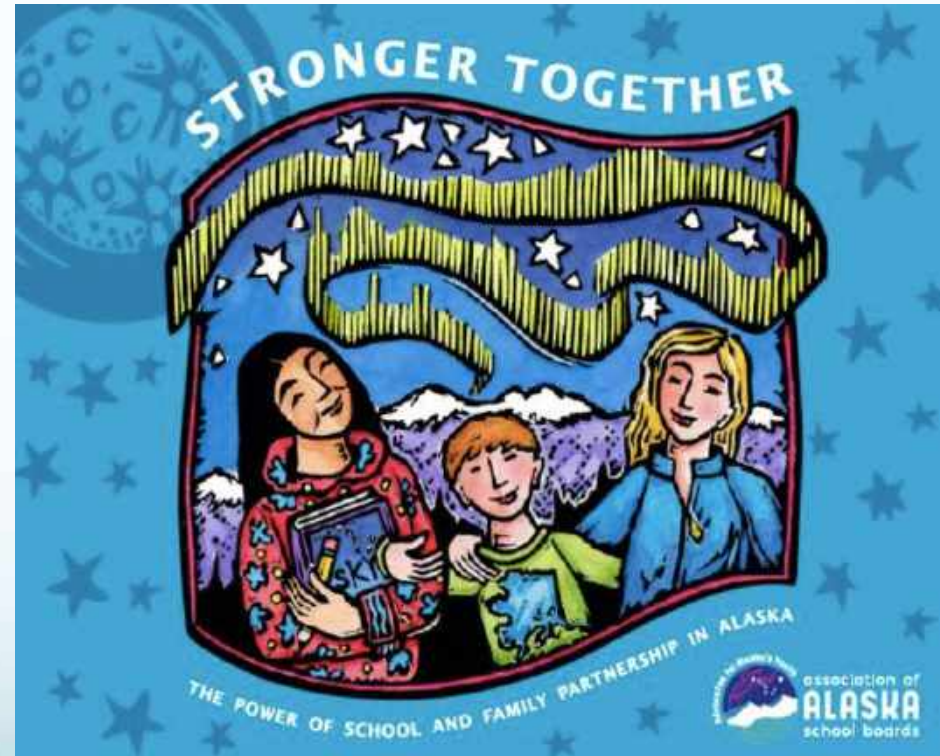


Two Community Examples

Healing Community/Youth dialogues



Stronger Together:
Strengthening family
partnerships.



Metlakatla Community Dialogues





Co-creating

Participants identified topics from the traditional cultural knowledge list that they were interested in exploring deeper with a small group. Groups worked on the next steps and resources available to make these ideas a reality. The evening closed with small groups sharing their enthusiasm and plan.

Role Models:

- Role models help many people in the community.
- Role models can help boys and girls. This can be done while doing traditional activities such as hanging a net, crocheting, knitting and building a sled, mechanics etc.
- Parenting Skills- Parenting classes, parenting children by holding at gatherings.
- Bullying- respecting one another
- Solutions
- Open communication
- Telling stories
- Correcting kids right away
- Carino words

Parents Speaking Yup'ik

- Yup'ik is lost because of school
- Mother speaks Yup'ik English= bilingual
- Language within experiences
- Parents speak a little
- Elders teach parents same time
- Elders work with Y daily lesson plans
- More time in Yup'ik
- Dialects are different
- Grandparents speak
- Elders can learn too



Community Raising Children

Yup'ik culture into learning system:

Areas of Learning

- Storytelling (sequencing characters setting plot- beginning middle conclusion- literacy)
- Respect (animals, plants, medicine, edibles, clothing)
- Survival skills & Surrounding Environment
- Yuraq

Learning

- Yup'ik Math
- Natraq
- Making Tools (math)
 - uluqs
 - talusat
 - spears
 - nets
 - fish traps
 - skin sewing
 - Qaspeq making
- *Challenges:* Time, adjusting curriculum, utilizing local experts regularly, write in Yup'ik
- *Local resources:* Calista maps, the resources come from the environment
- Utilize events to gather knowledge from Elders and experts;
- Come together as a community and make it a priority
- Experts in the classroom

Host Training

- An opportunity to learn the tools, techniques and social technologies to create the spaces to have difficult conversations.
- 2 full day commitment



1 minute individual reflection

Timer will help with time:)

How might you use a community conversation in your community? What sort of conversations could you have and with what group(s)?



Table discussion

How might you use a community conversation in your community? What sort of conversations could you have and with what group(s)?



Family Partnership: The Opportunity



Family Engagement

“If we carry intergenerational trauma (and we do), then we also carry intergenerational wisdom. It’s in our genes and in our DNA.” - Kazu Haga



Family
**(EM)POWER
HOUR**

lll



Stronger Together: A framework for school family partnerships in Alaska

Information and resources on building blocks for partnerships with families in Alaska:

- ***Embedding a Mindset***
- ***Relationships***
- ***Culturally Responsive Partnerships***
- ***Links to Learning (& Place)***
- ***Building Confidence and Skills***
- ***Co-Regulation (Regulating Emotions Together)***
- ***Partnering at a Distance***

Contact information

Claudia Plesa
cplesa@aasb.org

Lisa X'unyéil Worl
lworl@aasb.org

Association of Alaska School Boards
1111 W. 9th Street, Juneau, Alaska
99801
907-463-1660



ICE TOOLS

Whole
School SEL /
Trauma
Informed

Youth
Leadership &
Engagement

School
Climate
Building

Cultural
Integration

Education
and
Engagement
Research

Assets and
Resiliency

Community
Planning &
Communication

Family
Partnerships

Community
Conversation
& Coalition
Building



Share out your reflections

Where district is at - where able to really engage and collaborate vs where are they having a harder time or just not engaging yet -

Where are you districts strengths? And where are you less clear or would you like some input and feedback from families and community partners?

what service do you want to know more about?

Gunalchéesh - Haw'aa - Thank you!

Contact information

Claudia Plesa
cplesa@aasb.org

Lisa X'unyéil Worl
lworl@aasb.org

Association of Alaska School Boards
1111 W. 9th Street, Juneau, Alaska 99801
907-463-1660

