


Facility Safety and Risk Management

10/13/2017



Cole Cummins, ARM-P, CPSI
Loss Control Manager
Alaska Public Entity Insurance

Objectives

- Exit Routes
- Exit Marking and Illumination
- Emergency Action Plan
- Fire Prevention Plan
- Playgrounds
- Fire Marshall's Concerns
- Resources



The Exit Route

- The exit route must be accessible and free of obstructions.



The Exit Route

- The exit route must be accessible and free of obstructions.



EXIT??



EXIT??



The Exit Discharge

- Are the exits blocked by snow, ice or materials stored outside?
- Special care should be given during winter months to prevent ice and snow buildup to help ensure safe exiting.



Exit Markings



Exit Markings

- Each exit must be clearly visible and marked with an “Exit” sign
- Each exit route door must be free of decorations or signs that obscure the visibility of the door



Exit Markings

If a door is likely to be mistaken for an exit, a NOT AN EXIT sign must be posted on it.



Egress Illumination

Emergency Illumination

- Operates for 1.5 hours under emergency operation

Testing of Lighting

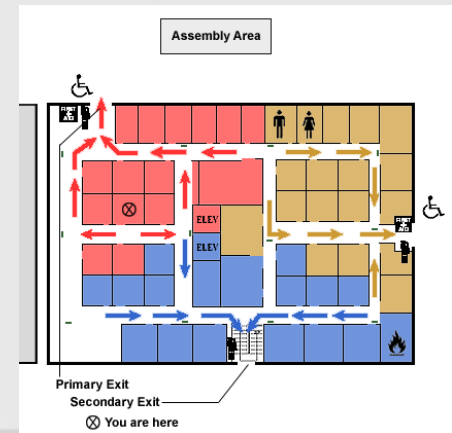
- Full 1.5 hour test annually and 30 second test every 30 days



Emergency Action Plan

Emergency Action Plan >> Minimum Requirements

- Means of reporting fires and other emergencies
- Evacuation procedures and emergency escape route assignments
- Procedures for employees who remain to operate critical operations before they evacuate
- Accounting for all employees and students after an emergency evacuation has been completed



Emergency Action Plan

REPORTING CHILD ABUSE AND NEGLECT

CONTACTS:

Fill in appropriate names and phone numbers for the following in your school.

	PHONE #	FAX #
OCS	465-1650	465-1668
Counselor	_____	_____
Principal	_____	_____

According to state statutes (AS 47.17.010-070), school personnel are required to report suspected child abuse and/or neglect of students. Staff members may call counselor or principal to assist with the procedure. Staff members will use the district's Referral for Suspected Child Abuse or Neglect form.

- ▶ Individual suspecting abuse or neglect fills out Referral for Suspected Child Abuse form (form is available from counselor, nurse, or office).
- ▶ With form in hand, call Office of Children's Services to give information required on the form, and to describe nature of concern. Be very specific and detailed with information.
- ▶ Have form signed by principal or assistant. Fax form to OCS. Make copy for principal. Mail original form to Student Services Director at District Office. > > >

REPORTING CHILD ABUSE AND NEGLECT

INTRUDERS ON CAMPUS

RESPONSE TO COMMUNITY EMERGENCY/EVACUATION OF BUILDING

EARTHQUAKE/LANDSLIDE/AVALANCHE/Tsunami RESPONSE

LANDSLIDE/AVALANCHE RESPONSE (CONT.)

WEAPONS AND DANGEROUS INSTRUMENTS ON CAMPUS

BOMB THREAT

THREATS OF HARM TO SELF OR OTHERS

THREATS OF HARM TO SELF OR OTHERS (CONT.)

MEDICAL EMERGENCIES

COMMUNICATION PLAN

DISTURBANCE ON CAMPUS/REMINDER CHECKLISTS

Parents and Visitor Access

- Are outside doors locked throughout the day?
- Do parents/visitors have to check in with the office and wear a badge/name tag?
- Who has access to the building?
- Do the police and fire have a floorplan of your facility?



Portable Fire Extinguishers



Playground Considerations



- 200,000 injuries annually required emergency room treatment
- Playground-related deaths involved:
 - Entanglements and Entrapment
 - Falls
 - Impact from equipment tip over or structural failure
- Falls are the most common hazard (44% of injuries)

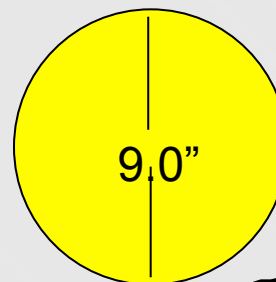
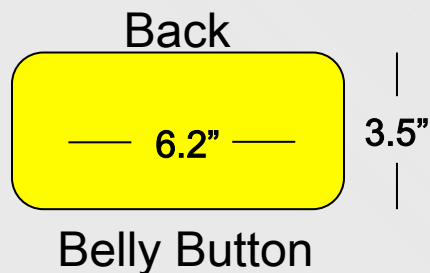
Playground Considerations

- Most common hazards
 - Protrusion
 - Entanglement
 - S hooks
 - Trip hazards
 - Crush, shear and sharp edge
 - Entrapments
 - Surfacing material
 - Wood chips, shredded rubber, pea gravel, etc.



Entrapments

A child's torso is smaller than a child's head



Fire Marshall's Top School Issues

- Emergency lights
- Exit signs
- Combustible material on the walls – 20%
- Blocked exits
- Suspended material from the ceiling
- Covering lights with blankets
- Storage within mechanical rooms
- Power strips
- Fire Drills



Power Strips



Secondary Containers



Sprinklers



Sprinklers



Housekeeping



Resources

- School Safety and Security Checklist
- Fire/Safety Self-Inspection Form
- Public Playground Safety Handbook
 - <https://www.cpsc.gov/s3fs-public/325.pdf>
- Insurance/School District Risk Management Services
 - Inspections
 - Training

Questions - Discussion



For Additional Information

Cole Cummins
Loss Control Manager
ccummins@akpei.com

907-523-9470
www.akpei.com