



ALASKA INITIATIVE FOR COMMUNITY ENGAGEMENT



association of
ALASKA
school boards

INTRODUCTIONS

Purpose & Agenda

Purpose:

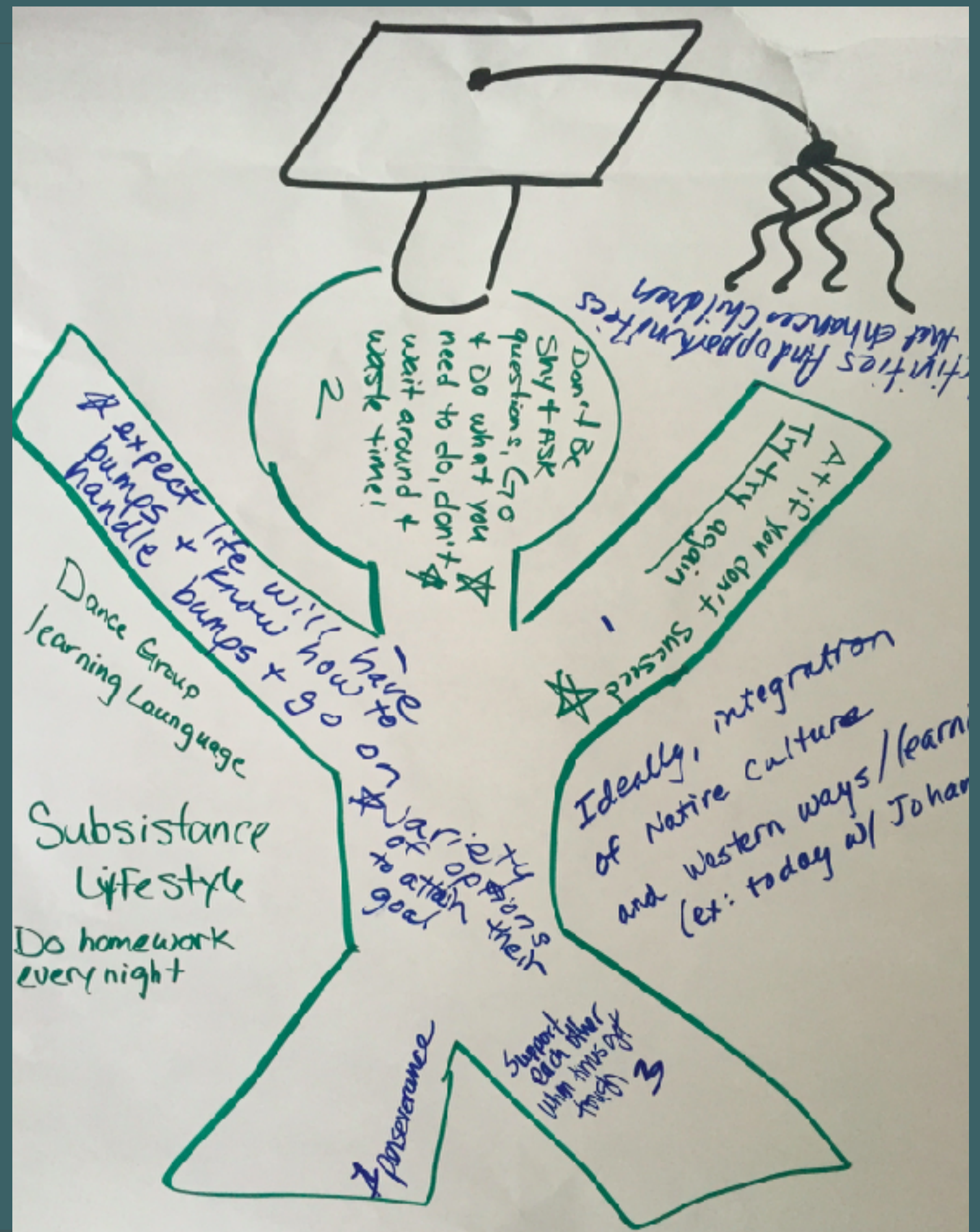
- Explore key components and mindsets of Community Engagement
- Discuss key research on Community Partnerships
- Discuss best practices for doing this work

Agenda

- Welcome, Agreements
- Introductions
- Importance of Community Engagement
- Community Examples
- Group discussion

REFLECTION:

What helped you to succeed?





“Community engagement is most successful when it respects the wisdom of the community and that wisdom is in the people.”



WHAT DOES THE RESEARCH SAY?

- Brain Science (ACES & Culturally Responsive Learning)
- Education Science (SEL, Engagement, School Climate, Academic Improvement)
- Health and Behavioral Health (Protective Factors- Trauma)
- Development: 40 Assets
- Community - Based Knowledge

Community Engagement is the intentional action of groups and individuals working together to create healthy environments that support the growth and education of children and youth.

A photograph of several children sitting at a table, focused on sorting through a large pile of small red beads. The child in the foreground is wearing a red shirt and is looking down at the beads. Other children are visible in the background, also working with the beads. The scene is brightly lit, suggesting an indoor setting like a classroom or a workshop.

School Climate



Connectedness

Caring Adults

59 ▼ 1
% favorable

Community Support

72 ▼ 1
% favorable

Cultural Connectedness

50 % favorable

High Expectations

78 ▼ 2
% favorable

Parent and Community Involvement

59 ▼ 2
% favorable

Peer Climate

33 ▼ 5
% favorable

Respectful Climate

58 ▼ 2
% favorable

School Safety

70 ▼ 3
% favorable

Social and Emotional Learning (Grades 6-12)

75 ▼ 1
% favorable

Student Involvement

47 ▼ 4
% favorable

Student Perceptions of Peer Alcohol Use

83 ▲ 1
% favorable

Student Risk Behaviors: Delinquent Behaviors

84 ▼ 0
% favorable

▼ 2

from
2016 School
Climate and
Connectedness
Survey

59 %
responded favorably

Explore this topic by subgroup

Click on a subgroup category below to see the percentage of responses by subgroup for Parent and Community Involvement

Subgroup category	Subgroup	Percentage of favorable responses
Student Grade Level	Alaska Native	60%
Student Gender	American Indian	53%
Student Race/Ethnicity	Asian	57%
Language Spoken at Home	Black or African-American	52%
Grades Received	Hispanic or Latino	55%
School Missed Without Permission	Native Hawaiian or Other Pacific Islander	60%
	White	61%
	Two or more races	57%

Total of 24,085 responses



association of
ALASKA
school boards

“Outside of school and home, I know at least one adult I can talk to, if I have a problem.”

“Students in this school help each other, even if they are not friends.”

“At school, there is a teacher or some other adult who will miss me when I'm absent.”

“I have given up on school.”

“I want very much to get more education after high school.”



Circle of Trust

Group Reflection

Where district is at:

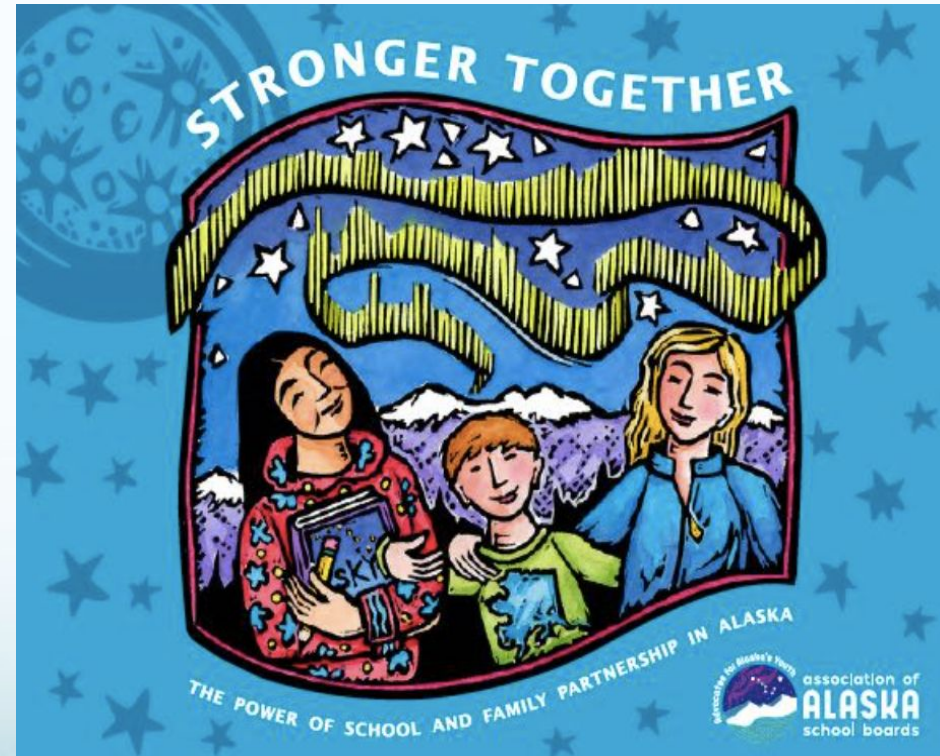
- Where able to really engage and collaborate?
- Where are they having a harder time or just not engaging yet?

Two Community Examples

Healing Community/Youth dialogues



Stronger Together:
Strengthening family
partnerships.



Metlakatla Community Dialogues

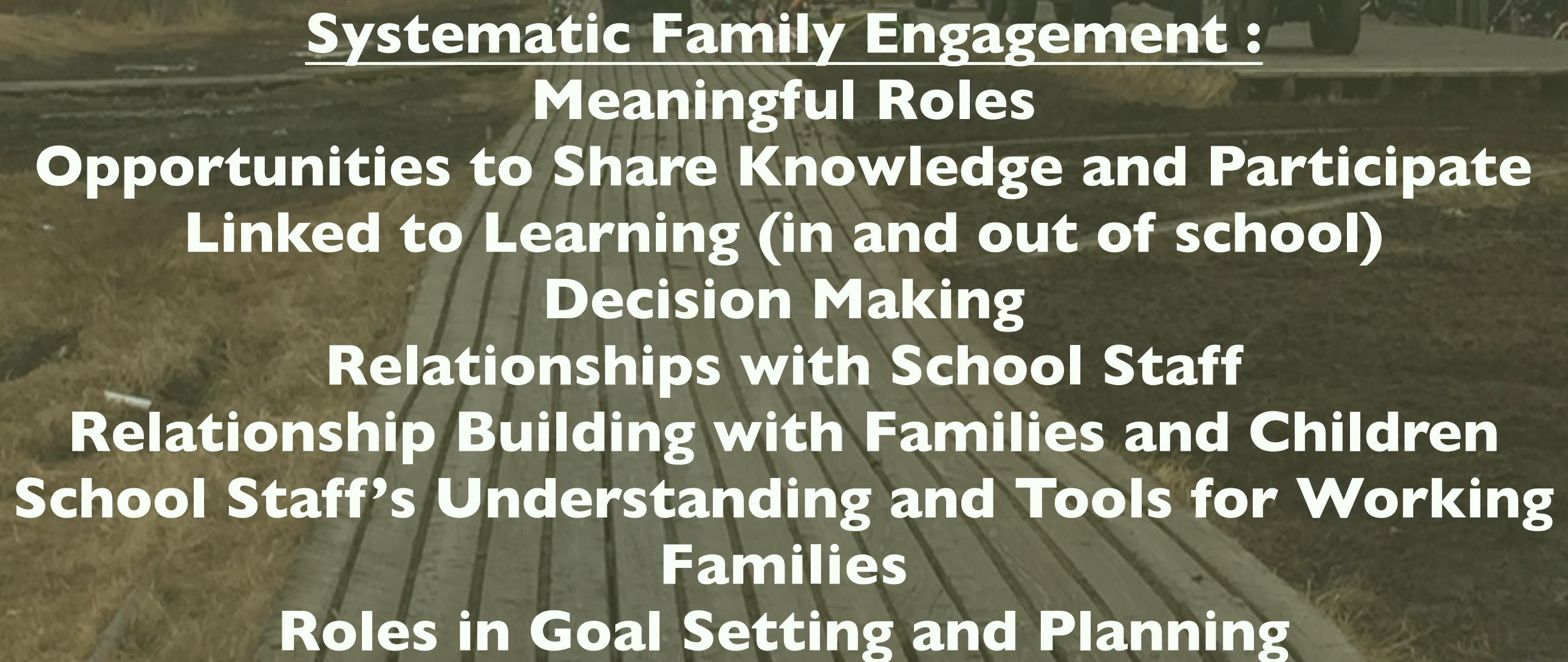




association of
ALASKA
school boards



Family Engagement



Systematic Family Engagement :
Meaningful Roles
Opportunities to Share Knowledge and Participate
Linked to Learning (in and out of school)
Decision Making
Relationships with School Staff
Relationship Building with Families and Children
School Staff's Understanding and Tools for Working
Families
Roles in Goal Setting and Planning

Group Reflection

Growing the Relationship:

- Where are you districts strengths?
- Where would you like some input and feedback from families and community partners?



INGREDIENTS OF SUCCESSFUL COMMUNITY ENGAGEMENT:

- 1) Coordinated
- 2) Collaborative
- 3) Embedded
- 4) Community/Family Partnership
- 5) Site Administrator Leadership
(key success factor)
- 6) Sequenced
- 7) Focused
- 8) Measured
- 9) Integrates Research and
Community Best-Practices

ICE TOOLS

Whole
School SEL /
Trauma
Informed

Youth
Leadership &
Engagement

School
Climate
Building

Cultural
Integration

Education
and
Engagement
Research

Assets and
Resiliency

Community
Conversation
& Coalition
Building

Community
Planning &
Communication

Family
Partnerships



AASB Supports

- What supports can AASB provide?
- What do you want to know more about?

Board Roles & Community Engagement

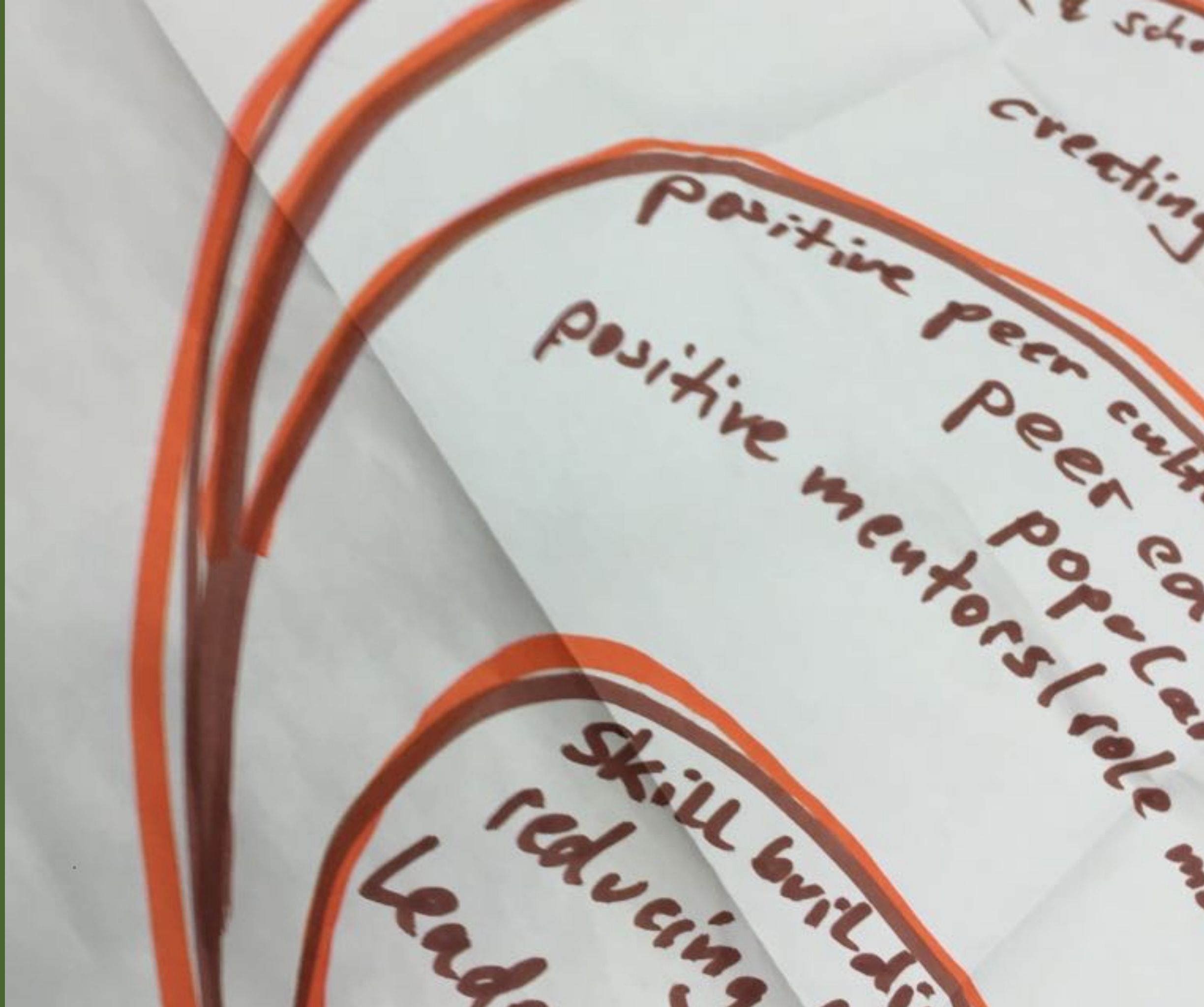




VISION

What goals do you have for engaging? What goals can you help the community fulfill? What are the goals of the rest of the board?

STRUCTURE: POLICIES & STRATEGIC PLAN





ACCOUNTABILITY

MEASUREMENTS
PROGRESS REVIEW



ETHICS:

IS THIS SUPPORT EQUITABLE FOR ALL STUDENTS AND FAMILIES?

ADVOCACY:

MOVING THE WORK FORWARD - SPREADING THE WORD





ALASKA INITIATIVE FOR COMMUNITY ENGAGEMENT



Lori Grassgreen,
Director,
Initiative for Community Engagement
lgrassgreen@aasb.org

Jenni Lefing
School Climate Coordinator
jlefig@aasb.org

Heather Coulehan
Social and Emotional Learning
Coordinator
hcoulehan@aasb.org

Konrad Frank
Youth Leadership and Community
Engagement Educator
Cultural Safety
kfrank@aasb.org

Claudia Plesa
Youth Leadership
Community/Family Engagement
Evaluation Support
cplesa@aasb.org