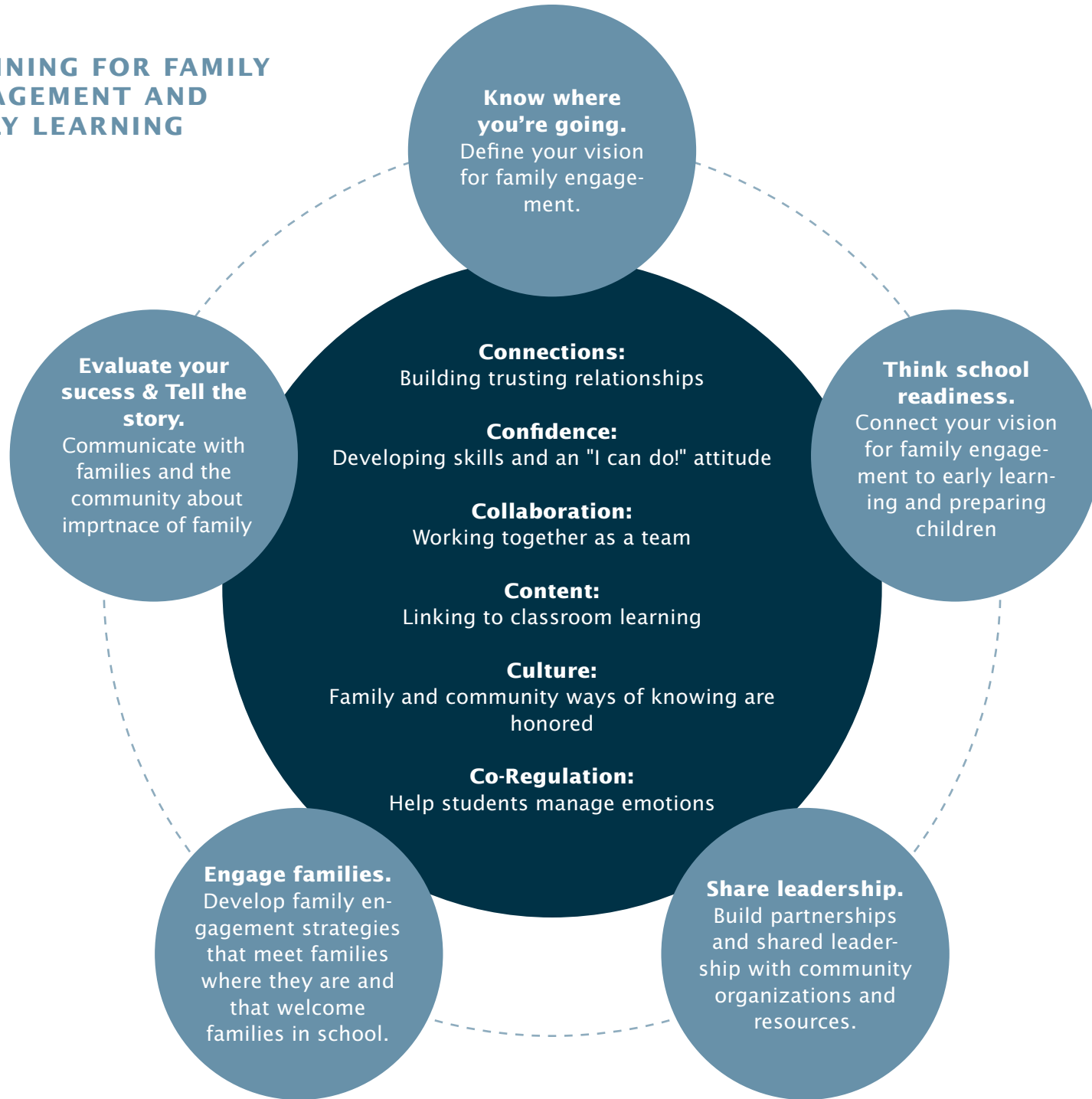


# PLANNING FOR FAMILY ENGAGEMENT AND EARLY LEARNING



**Know where you're going.**

Define your vision for family engagement.

- What does the School Climate and Connectedness Survey tell you about family engagement?
- What other information is available about family involvement in your schools?
- What do you hope to have happen as a result of family engagement?

**NEXT STEPS:**

**Think school readiness.**

Connect your vision for family engagement to early learning and preparing children for school.

- What early learning supports does your district offer?
- What do parents of pre-K students need to feel comfortable bringing their children to school for the first time?
- How can you link the events to the learning skills kids need?

**NEXT STEPS:**

**Share leadership.**

Build partnerships and shared leadership with community organizations and resources.

- Who has a good mission match in your community for family engagement work?
- What voices need to be represented at the table?
- How will you communicate with partners and bring them to the table?

**NEXT STEPS:**

**Engage families.**

Develop family engagement strategies that meet families where they are and that welcome families in school.

**Evaluate your success and tell the story.**

Communicate with families and the community about the importance of family engagement, early learning, and the progress you have made.

- How will your engagement activities build up to each of the building blocks?
- Which of the building blocks do you think are the most important to focus on?
- Which of the building blocks are current activities supporting, and where are there gaps?
- What do parents think is the most important to address?

- How do you know you have been successful? Which strategies worked best? What gaps need to be addressed?
- How will you follow up with families and the school after the event? How will you ask them what they thought about the event?
- How will you tell the community about your family engagement activities?

**NEXT STEPS:**

**NEXT STEPS:**